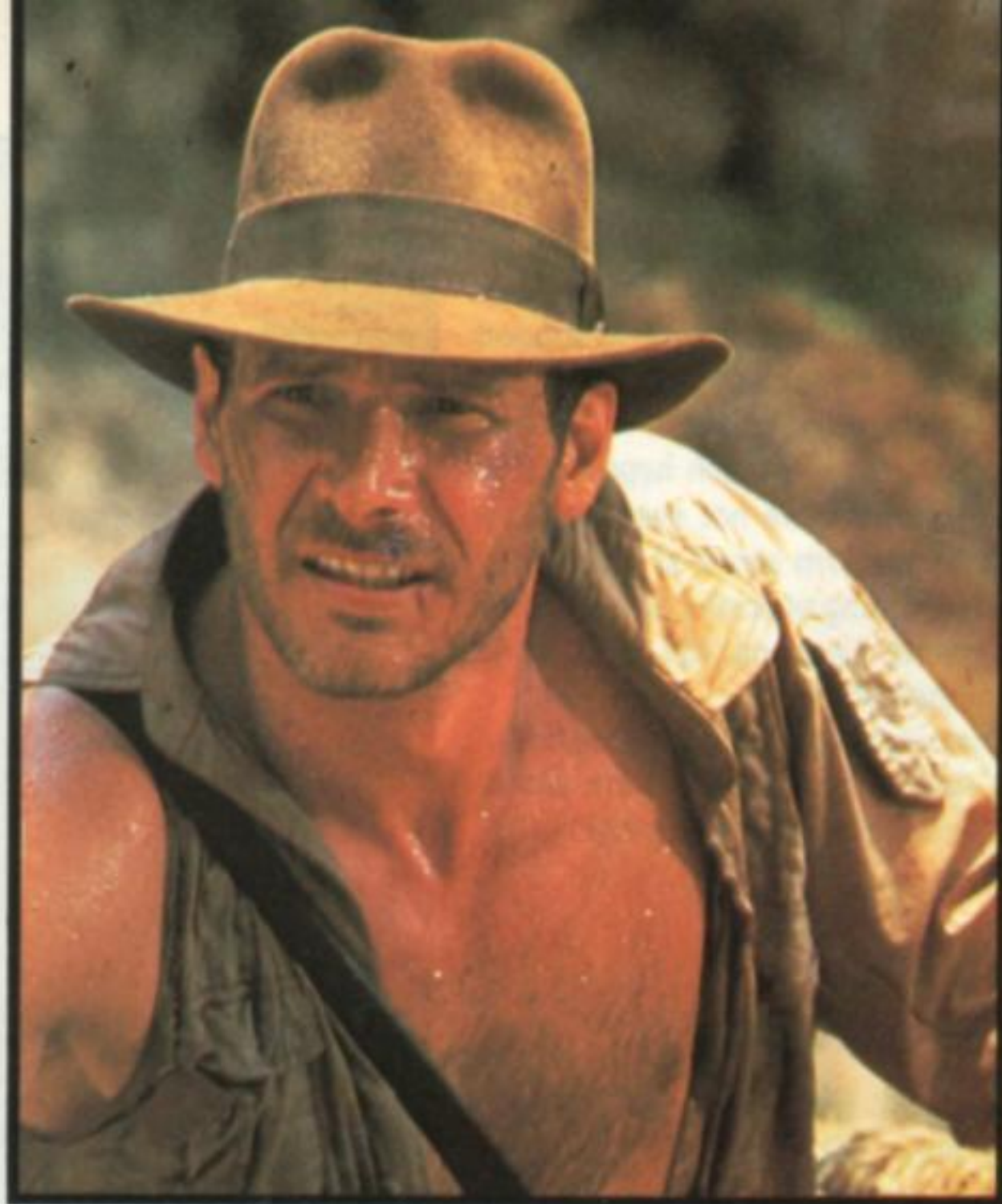


INDIANA JONES & THE TEMPLE OF DOOM

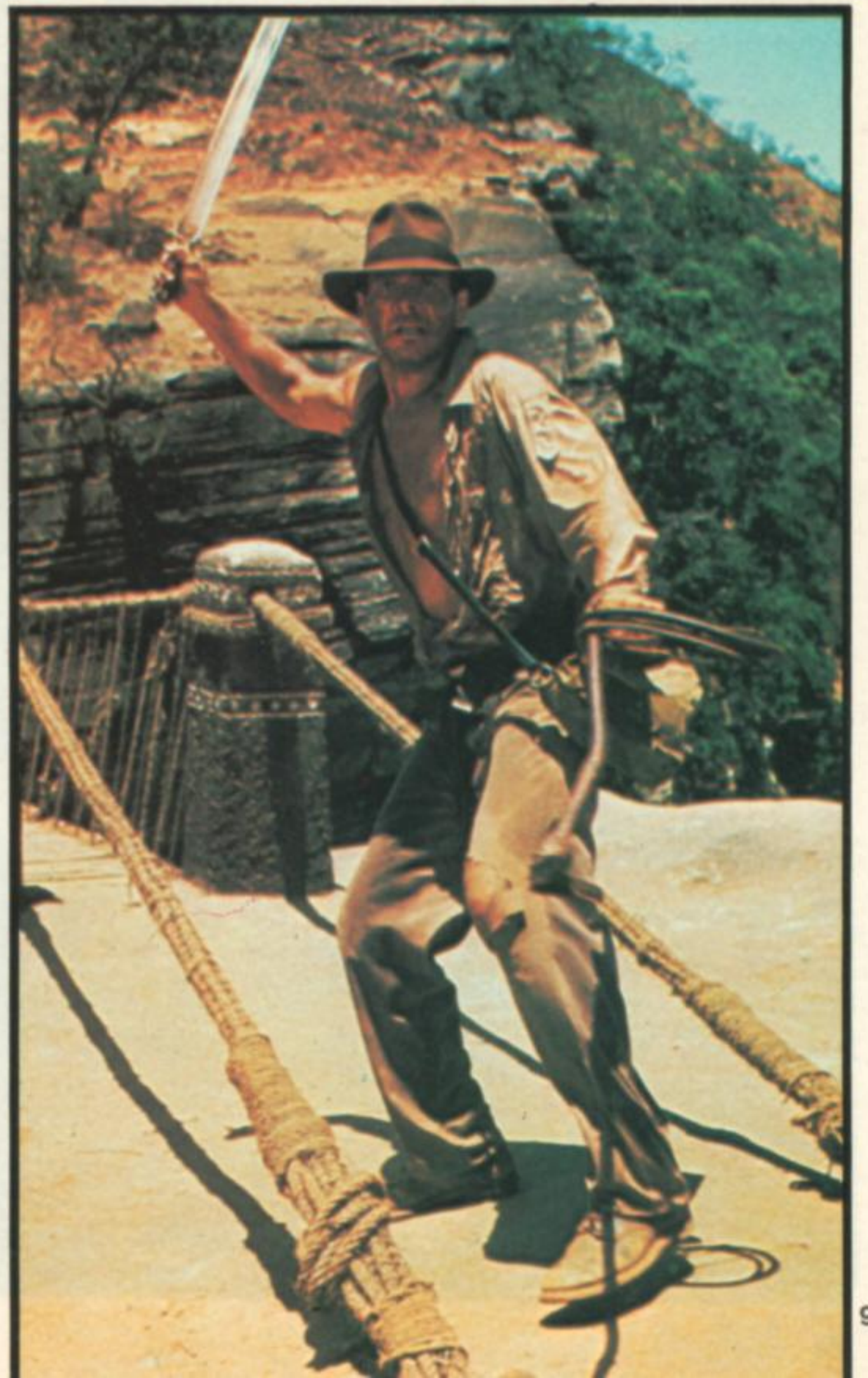
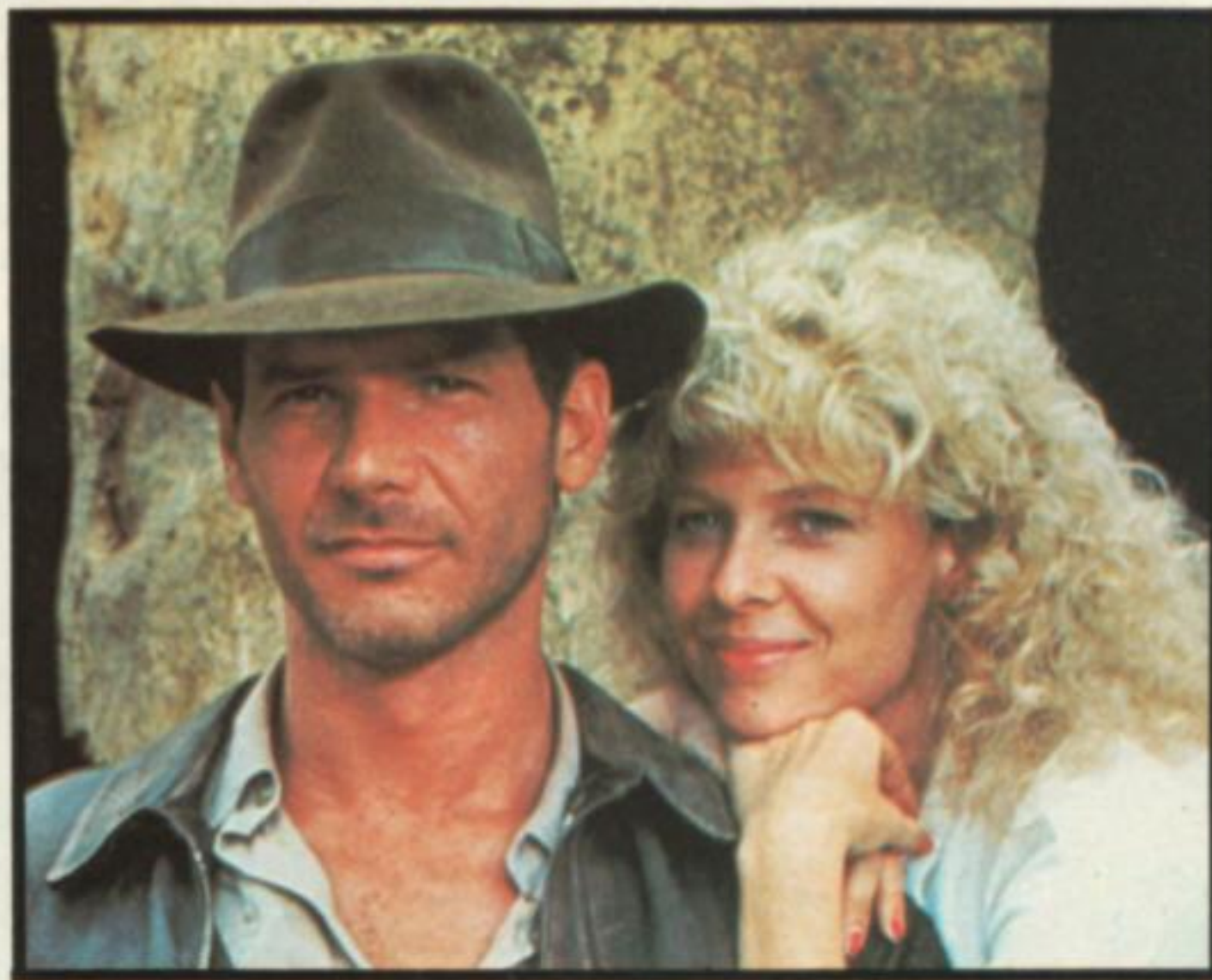


INDIANA JONES... we always knew the daredevil archeologist would come walking (or more probably running) back onto our cinema screens. Yes, in the grand tradition of classic pulp heroes everyone's favourite schoolteacher-cum-explorer, as personified by Harrison Ford in the internationally popular *Raiders of The Lost Ark*, returns for more action-packed adventure in *Indiana Jones and the Temple of Doom*.

The new film re-unites the successful partnership of director Steven Spielberg and executive producer George Lucas, along with some of the most experienced motion picture technicians in the business. Filmed on three continents, *Indiana Jones* takes Indy and his two new companions – nightclub entertainer Willie Scott and a Chinese kid called Short Round – through a steady stream of perils, from the seedy backstreets of Shanghai to the Indian splendors of a Maharajah's palace, many thrills and spills on promised along the way.

Principal photography began over a year ago on April 18, 1983 on the tropical island of Sri Lanka, and later all the units left this exotic location to film on huge jungle sets at EMI-Elstree in the not-so-exotic Borehamwood on the outskirts of London. Following the three intensive months of the Elstree shoot, the technical blue screen sequences were shot at Lucasfilm's very own Californian facility in Marin County. Additional sequences were shot at other Northern California locations, including Hamilton Air Force Base, which doubled as the Shanghai Airport, and action scenes were shot at Mammoth Mountain and the American and Tuolumne Rivers. Principal photography was completed on September 8, 1983, while the optical and special effects wizardry continued right up until March this year at Lucasfilm's Industrial Light and Magic SPFX unit.

Sri Lanka offered Lucasfilm every conceivable variation of scenery, including thick jungles, rugged mountains, lush valleys and impressive rock formations, giving the production team the visual splendor they were looking for as a backdrop to Indy's daring exploits. Filming began on the Hantane Tea Estate situated high above the town of Kandy in the provincial hinterland. Amid the tea bushes, the art department built an Indian village, circa 1935. A newly constructed set was more practical than employing an existing village, since the site ►

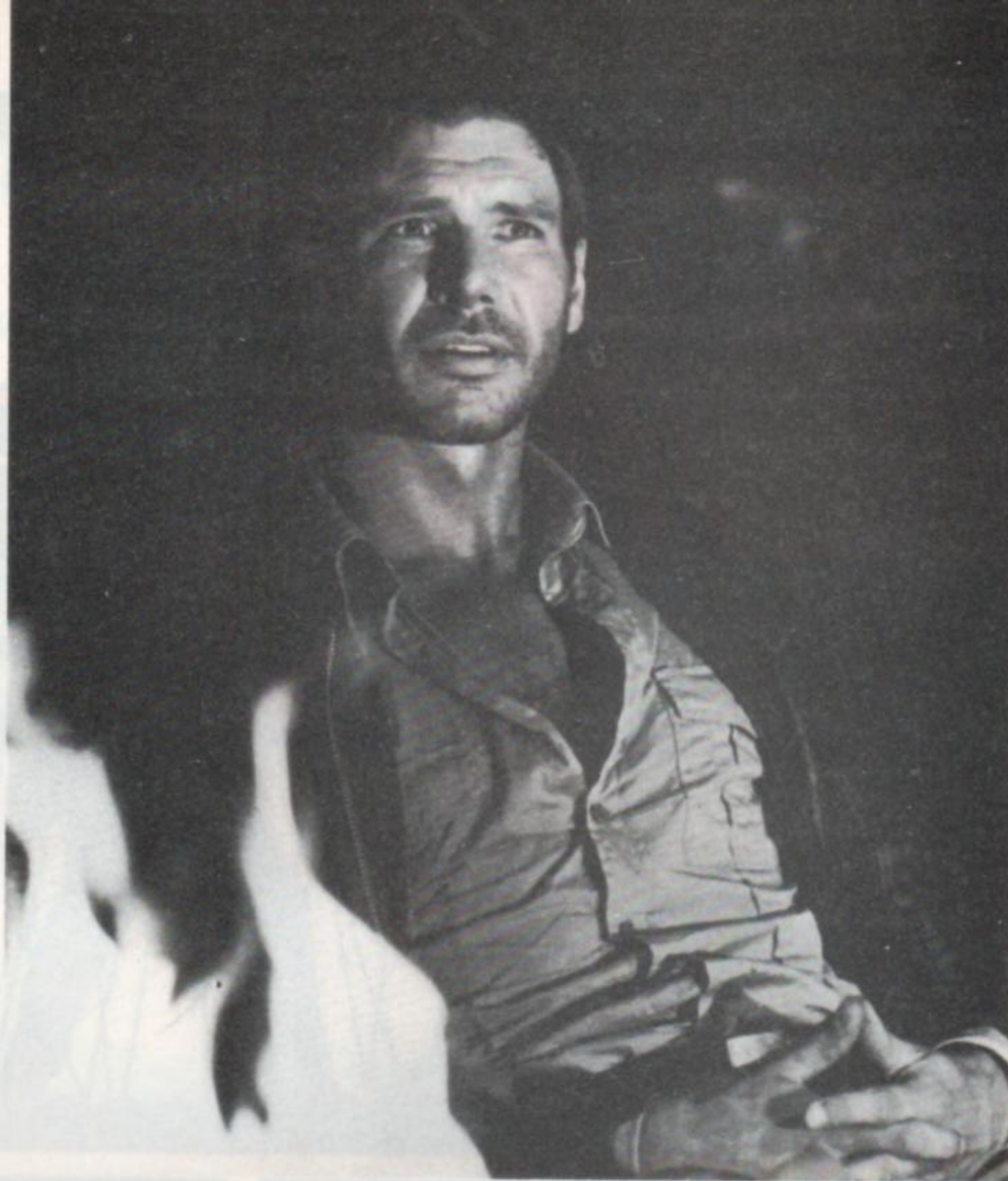


INDIANA JONES & THE TEMPLE OF DOOM

► had to appear alternatively desolate and then lush and prosperous.

Towards the end of the second week, the main unit was joined by the second unit, which had just finished filming a car chase sequence in the narrow streets and back alleys of Macau. With two units shooting side by side in Sri Lanka, Spielberg was organising the filming of perilous exploits on a specially constructed rope bridge spanning a gorge more than three hundred feet deep. This looks to be one of the exciting highlights of the picture. "We were lucky enough to find an accessible gorge right nearby a construction site where a British company was building a large dam," notes producer Robert Watts. "Thus, we had top-notch engineers and workers with convenient equipment to string the bridge for us with steel and cable. Once the bridge was up, we dressed it up to look old and rickety."

When the *Indiana Jones* production team moved from Sri Lanka to England, they made use of virtually every stage at Elstree Studios, including Stage Six, the vast *Star Wars* Stage. Veteran production designer Elliot Scott was given the task of creating the film's many architectural splendors and diverse environments. The most breathtaking of these is the Temple of Doom itself, housed



Above: Harrison Ford stars as the daredevil archeologist, looking as astonished as ever, in *Indiana Jones and the Temple of Doom*. Top right: Sporting the remnants of a shirt, Indy crosses a rickety rope bridge on his quest for the *Temple of Doom*. Far top right: A quick change of clothes transforms Indy into Dr Jones, Professor of Archeology, but he is still in need of a shave. Far right: Accompanied by nightclub singer Willie Scott and a cute Chinese kid called Short Round, Indy makes his way through an Indian village. Below right: The rugged features of *Indiana Jones*. Below: A romantic interlude between Indy and Willie Scott (played by the captivating Kate Capshaw).





inside the elaborate Pleasure Pavilion of the Palace of Pankot. Scott's other creations include the exotic interiors of Indy's Suite and Willie's Suite at the Palace, a sinister Spike Chamber, a vast quarry set which dominated the immense *Star Wars* Stage, a labyrinth of mine tunnels and mine caverns, the interior of the amusingly named Obi Wan Nightclub in downtown Shanghai, and a jungle clearing, complete with an elephant, matching one featured in sequences filmed in Sri Lanka. Scott has worked on early Hitchcock thrillers and major musicals and later designed the rich atmospheres of such films as *The Haunting* and *Dragonslayer*.

Like its predecessor, *Indiana Jones and the Temple of Doom* has a primary concern of action all the way, with many cliffhanging, careering special effects and stunts. Special effects supervisor George Gibbs and stuntmen Vic Armstrong claim to have concocted new



thrills never before seen on film. Gibbs was also involved in recent fantasy blockbusters *Superman*, *Flash Gordon* and *Conan the Barbarian*.

The title role (Indiana Jones that is; the Temple of Doom appears as itself!) is of course once again played by Harrison Ford (for career information refer to the detailed biography, *The Harrison Ford Story*, by Starburst editor Alan McKenzie!). Joining the whip-wielding hero this time round is Willie Scott, a captivating nightclub singer, portrayed by Kate Capshaw (recently to be found in *Dreamscape*). Distinguished British character actor Philip Stone, who was featured in Stanley Kubrick's *A Clockwork Orange*, *Barry Lyndon* and *The Shining*, plays Captain Blumburt, a British officer whom Indy meets at the mysterious Palace of Pankot.

As well as bringing Lucas and Spielberg together again, *Indiana Jones* is produced by

Robert Watts, who is working on his fifth picture for Lucasfilm. Steven Spielberg's longtime associates Frank Marshall and Kathleen Kennedy are, respectively, co-executive producer and associate producer. The screenplay is by the award-winning team of Willard Huyck and Gloria Katz based on a story by George Lucas.

Other familiar Lucasfilm names who have contributed to *Indiana Jones* include popular composer John Williams once again providing the score; visual effects supervisor Dennis Muren, heading the team of SPFX technicians at ILM; and film editor Michael Kahn, the Academy Award winning editor of *Raiders* who has also edited four other Spielberg films.

Indiana Jones and the Temple of Doom is on release across the country from June, and going on the film's locations (not to mention the talented names involved) it is a high-adventure full of Eastern promise.